



Village of Bridgeview  
7500 S. Harlem Avenue  
Bridgeview, IL 60415



Pace Suburban Bus  
550 W. Algonquin Road  
Arlington Heights, IL 60005

Design Team



ARCHITECTURE INTERIORS PLANNING  
300 W. 11th Street, Suite 400, Chicago, IL 60604  
P: 312.86.6415 F: 312.272.8888



ARCHITECTURE INTERIORS PLANNING  
300 W. 11th Street, Suite 400, Chicago, IL 60604  
P: 312.86.6415 F: 312.272.8888

Civil Engineer  
Rabouan Engineering  
175 N. Franklin Avenue  
South Holland, Illinois 60473  
T: (708) 331 6790

Structural Engineer  
CE Anderson & Associates  
175 N. Franklin Avenue  
Chicago, IL 60606  
T: (312) 750 1701

M.E.P. Engineer  
M.E.P. Infrastructure Solutions, Inc.  
440 S. LaSalle St.  
Chicago, Illinois 60605  
T: (312) 779-1185

MEP Engineer  
M.E.P. Infrastructure Solutions, Inc.  
440 S. LaSalle St.  
Chicago, Illinois 60605  
T: (312) 779-1185

MEP Engineer  
M.E.P. Infrastructure Solutions, Inc.  
440 S. LaSalle St.  
Chicago, Illinois 60605  
T: (312) 779-1185

MEP Engineer  
M.E.P. Infrastructure Solutions, Inc.  
440 S. LaSalle St.  
Chicago, Illinois 60605  
T: (312) 779-1185

MEP Engineer  
M.E.P. Infrastructure Solutions, Inc.  
440 S. LaSalle St.  
Chicago, Illinois 60605  
T: (312) 779-1185

MEP Engineer  
M.E.P. Infrastructure Solutions, Inc.  
440 S. LaSalle St.  
Chicago, Illinois 60605  
T: (312) 779-1185

MEP Engineer  
M.E.P. Infrastructure Solutions, Inc.  
440 S. LaSalle St.  
Chicago, Illinois 60605  
T: (312) 779-1185

MEP Engineer  
M.E.P. Infrastructure Solutions, Inc.  
440 S. LaSalle St.  
Chicago, Illinois 60605  
T: (312) 779-1185

MEP Engineer  
M.E.P. Infrastructure Solutions, Inc.  
440 S. LaSalle St.  
Chicago, Illinois 60605  
T: (312) 779-1185

MEP Engineer  
M.E.P. Infrastructure Solutions, Inc.  
440 S. LaSalle St.  
Chicago, Illinois 60605  
T: (312) 779-1185

MEP Engineer  
M.E.P. Infrastructure Solutions, Inc.  
440 S. LaSalle St.  
Chicago, Illinois 60605  
T: (312) 779-1185

MEP Engineer  
M.E.P. Infrastructure Solutions, Inc.  
440 S. LaSalle St.  
Chicago, Illinois 60605  
T: (312) 779-1185

MEP Engineer  
M.E.P. Infrastructure Solutions, Inc.  
440 S. LaSalle St.  
Chicago, Illinois 60605  
T: (312) 779-1185

MEP Engineer  
M.E.P. Infrastructure Solutions, Inc.  
440 S. LaSalle St.  
Chicago, Illinois 60605  
T: (312) 779-1185

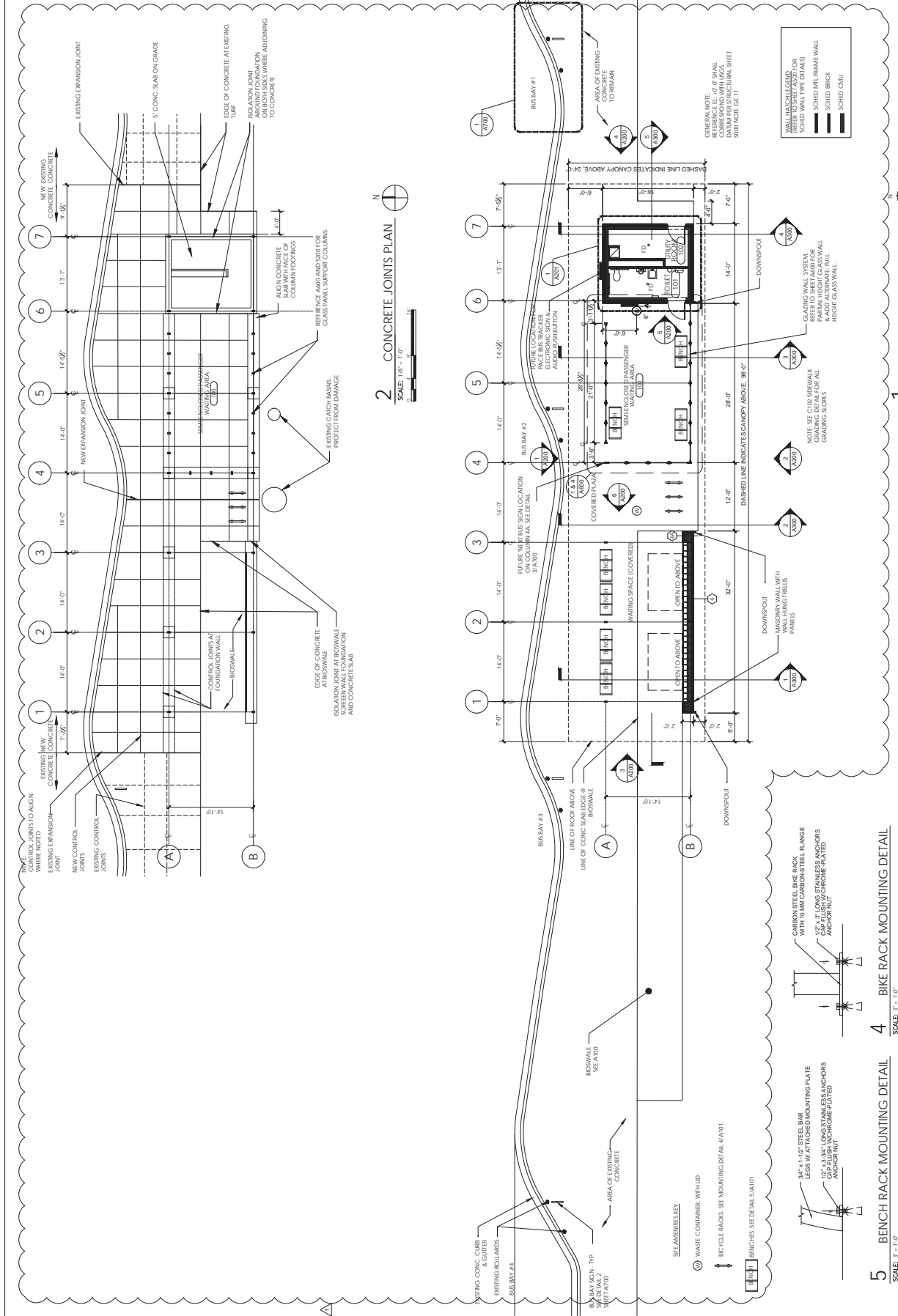
MEP Engineer  
M.E.P. Infrastructure Solutions, Inc.  
440 S. LaSalle St.  
Chicago, Illinois 60605  
T: (312) 779-1185

MEP Engineer  
M.E.P. Infrastructure Solutions, Inc.  
440 S. LaSalle St.  
Chicago, Illinois 60605  
T: (312) 779-1185

MEP Engineer  
M.E.P. Infrastructure Solutions, Inc.  
440 S. LaSalle St.  
Chicago, Illinois 60605  
T: (312) 779-1185

MEP Engineer  
M.E.P. Infrastructure Solutions, Inc.  
440 S. LaSalle St.  
Chicago, Illinois 60605  
T: (312) 779-1185

MEP Engineer  
M.E.P. Infrastructure Solutions, Inc.  
440 S. LaSalle St.  
Chicago, Illinois 60605  
T: (312) 779-1185



**2 CONCRETE JOINTS PLAN**  
SCALE: 1/8" = 1'-0"

**1 FLOOR PLAN**  
SCALE: 1/8" = 1'-0"

**4 BIKE RACK MOUNTING DETAIL**  
SCALE: 3/4" = 1'-0"

**5 BENCH RACK MOUNTING DETAIL**  
SCALE: 3/4" = 1'-0"

Mark	Description	Date
1	ADDITIONAL	02.27.2018
2	FINAL DESIGN	11.27.2017

Project Name:  
**TOYOTA PARK  
TRANSIT CENTER  
PHASE II**  
7000 S. HARLEM AVE.  
BRIDGEVIEW, IL 60455  
Project No.: UW-P1036-SA-17-091  
Drawing Title:  
**FLOOR PLANS,  
CONCRETE JOINTS,  
& ENLARGED PLAN**

NO.	DATE	BY	CHKD.	APP'D.

Sheet:  
**A101**

GENERAL NOTE: 1/2" RIBBED CONCRETE CORE AND WITH REINFORCING SHEET. SEE NOTE 02-11.

GENERAL NOTE: 1/2" RIBBED CONCRETE CORE AND WITH REINFORCING SHEET. SEE NOTE 02-11.

GLAZING WALL SYSTEM. REFER TO SHEET A070 FOR GLAZING DETAIL FOR ALL HIGH GLASS WALL.

GLAZING WALL SYSTEM. REFER TO SHEET A070 FOR GLAZING DETAIL FOR ALL HIGH GLASS WALL.

DASHED LINE INDICATES CANOPY ABOVE. 98'-0"

DASHED LINE INDICATES CANOPY ABOVE. 98'-0"

DOWNSCOUT MASONRY WALL WITH BRICK PANELS

DOWNSCOUT MASONRY WALL WITH BRICK PANELS

CARBON STEEL BIKE RACK WITH 10MM CARBON STEEL FLANGE

CARBON STEEL BIKE RACK WITH 10MM CARBON STEEL FLANGE

3/4" x 1/2" STEEL BAR LEGS W/ ATTACHED MOUNTING PLATE

3/4" x 1/2" STEEL BAR LEGS W/ ATTACHED MOUNTING PLATE

WASTE CONTAINER WITH LID

WASTE CONTAINER WITH LID

BIKE RACKS. SEE MOUNTING DETAIL 4/A/D1.

BIKE RACKS. SEE MOUNTING DETAIL 4/A/D1.



Village of Bridgeview  
7900 S. Cicero Avenue  
Bridgeview, IL 60415



Pace Suburban Bldg.  
550 W. Algonquin Road  
Arlington Heights, IL 60005



Design Team  
**STUDIO ARQ**  
ARCHITECTURE INTERIORS PLANNING  
300 WEST SUPERIOR STREET, CHICAGO, IL 60610  
P: 312.384.6415 F: 312.321.8988



ARCHITECTURE INTERIORS PLANNING  
1111 N. LAUREL STREET, CHICAGO, IL 60611  
P: 312.321.5281 F: 312.321.3282

Civil Engineer  
Robinson Engineering  
175 N. Franklin Avenue  
South Holland, Illinois 60473  
T: (708) 331 6790

Structural Engineer  
CE Anderson & Associates  
175 N. Franklin Avenue  
Chicago, IL 60606  
T: (312) 750 1701

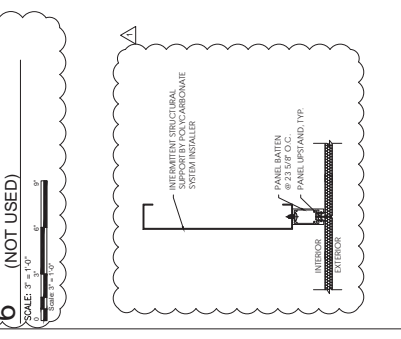
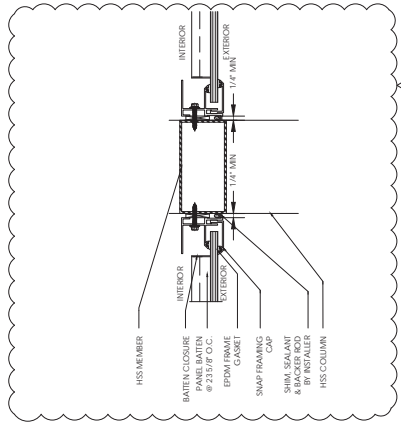
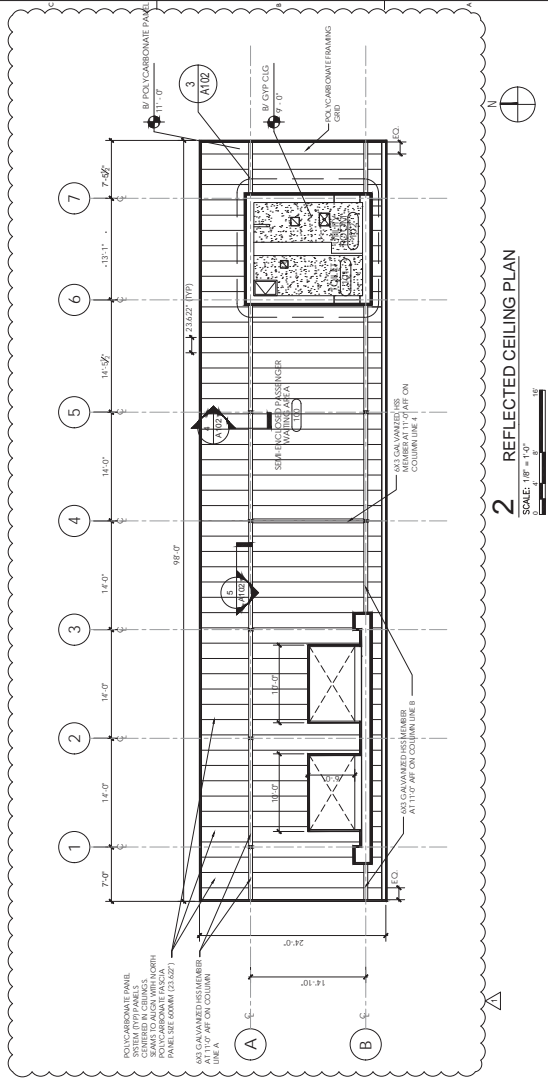
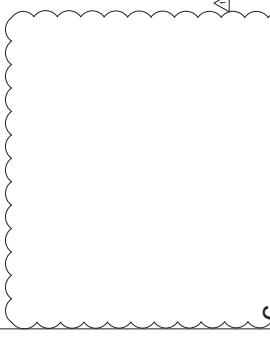
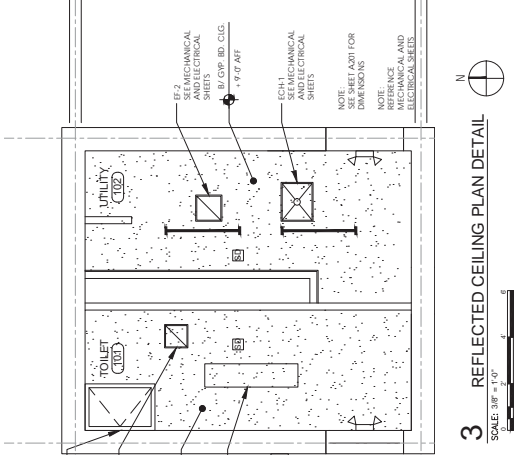
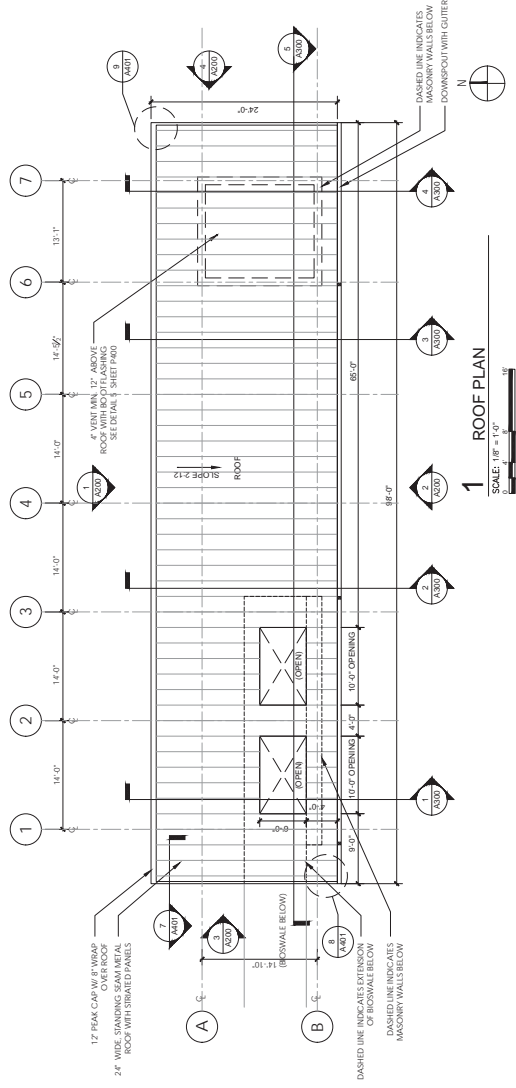
M.E.P. Engineer  
M.E.P. Infrastructure Solutions, Inc.  
440 S. LaSalle St.  
Chicago, Illinois 60605  
T: (312) 779-1185

Revision	Mark	Description	Date
1	ADDITIONAL	02.27.2018	
2	FINAL DESIGN	11.27.2017	

Project Name:  
**TOYOTA PARK TRANSIT CENTER PHASE II**  
7000 S. HARLEM AVE. BRIDGEVIEW, IL 60455  
Project No.: UWP1036-SA11-091  
Drawing No.:

ROOF PLAN & REFLECTED CEILING PLAN

Sheet  
A102



4 CONTINUOUS PANEL JOINT  
SCALE: 3/8" = 1'-0"  
SCALE: 3/8" = 1'-0"

5 HORIZONTAL PANEL TO PANEL CONNECTION  
SCALE: 3/8" = 1'-0"  
SCALE: 3/8" = 1'-0"

4 CONTINUOUS PANEL JOINT  
SCALE: 3/8" = 1'-0"  
SCALE: 3/8" = 1'-0"

2 REFLECTED CEILING PLAN  
SCALE: 1/8" = 1'-0"  
SCALE: 1/8" = 1'-0"

1 ROOF PLAN  
SCALE: 1/8" = 1'-0"  
SCALE: 1/8" = 1'-0"



City of Bridgeview  
7800 S. Oakton Avenue  
Bridgeview, IL 60415



Pace Sebastian Bus  
550 W. Algonquin Road  
Arlington Heights, IL 60005



STUDIO  
ARQ  
ARCHITECTURE INTERIORS PLANNING  
200 W. Lake Street, Suite 1000, Chicago, IL 60601  
P: 312.86.6415 F: 312.278.8888



UrbanWorks  
ARCHITECTURE INTERIORS PLANNING  
175 N. Franklin Avenue  
Chicago, IL 60606  
P: (312) 750 1701  
F: (312) 750 1185

Lead Engineer  
Kashawn Engineering  
South Holland, Illinois 60473  
T: (708) 331 6700

Structural Engineer  
CE Anderson & Associates  
175 N. Franklin Avenue  
Chicago, IL 60606  
T: (312) 750 1701

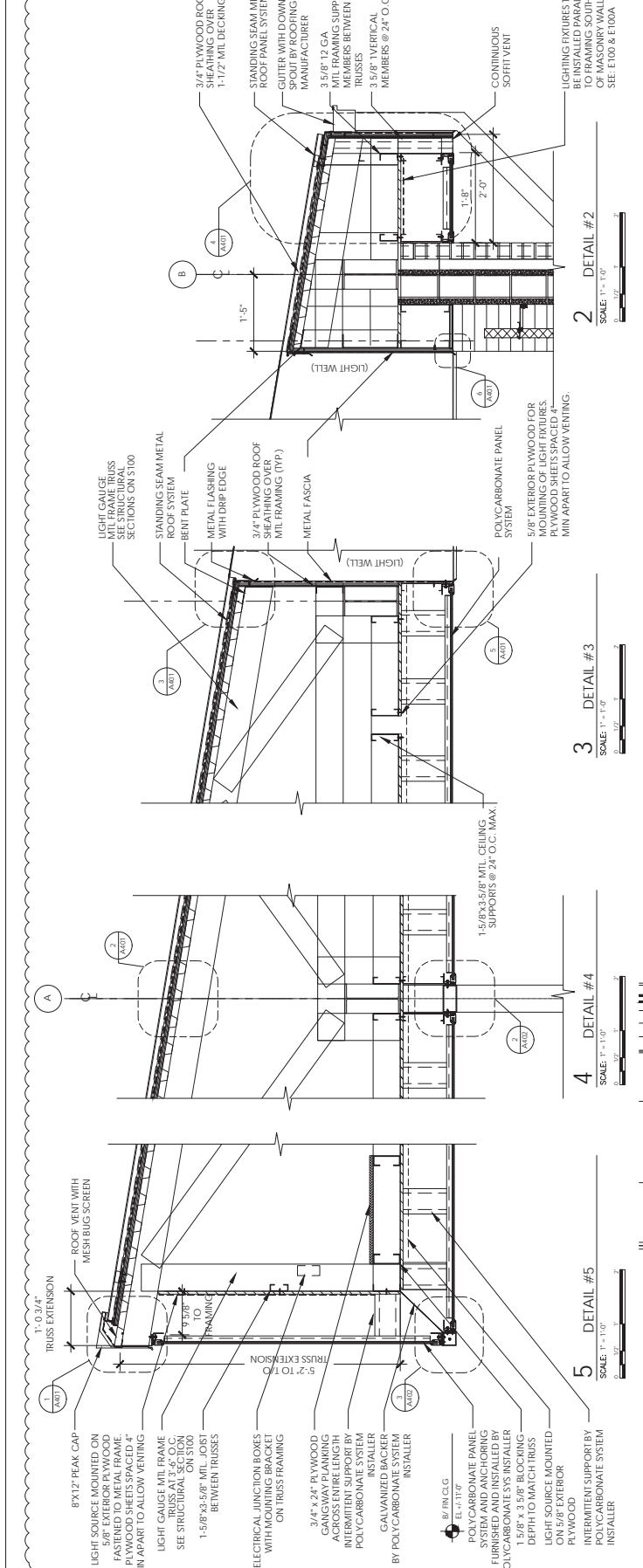
M.E.P. Engineer  
W.E.P. Infrastructure Solutions, Inc.  
440 S. LaSalle St.  
Chicago, Illinois 60605  
T: (815) 279-1185

Revision	Mark	Description	Date
1			
2			
3			
4			
5			
6			

Project Name:  
**TOYOTA PARK  
TRANSIT CENTER  
PHASE II**  
7000 S. HARLEM AVE.  
BRIDGEVIEW, IL 60455  
Project No.: UW-PT006-SA-17-001

Drawing Title:  
**EXTERIOR DETAILS**

ISSUED BY:	Sheet
DESIGNED BY:	
CHECKED BY:	<b>A400</b>
DATE:	
PROJECT NO.:	
PROJECT NAME:	



**1** DETAIL #1  
SCALE: 1" = 1'-0"

**6** VENT DETAIL  
SCALE: 1" = 1'-0"



Village of Bridgeview  
7800 S. Oakton Avenue  
Bridgeview, IL 60415



Pace Suburban Bldg  
550 W. Algonquin Road  
Arlington Heights, IL 60005



ARCHITECTURE INTERIORS & PLANNING  
300 WEST SUPERIOR STREET, SUITE 1100  
CHICAGO, IL 60610  
P: 312.346.6155 F: 312.278.8988



ARCHITECTURE INTERIORS & PLANNING  
300 WEST SUPERIOR STREET, SUITE 1100  
CHICAGO, IL 60610  
P: 312.346.6155 F: 312.278.8988

Chief Engineer  
Robbison Engineering  
1521 West Superior Street  
Chicago, IL 60643  
T: (708) 331 6790

Structural Engineer  
CE Anderson & Associates  
175 N. Franklin Avenue  
Chicago, IL 60606  
T: (312) 750 1701

M.E.P. Engineer  
M.E.P. Infrastructure Solutions, Inc.  
440 S. LaSalle St.  
Chicago, Illinois 60605  
T: (815) 279-1185

Revision	Mark	Description	Date

ADDRESS: 7000 S. HARLEM AVE  
PROJECT NO.: UW-P1036-SA11-001

PROJECT NAME:  
TOYOTA PARK  
TRANSIT CENTER  
PHASE II

7000 S. HARLEM AVE  
BRIDGEVIEW, IL 60455

DATE: 11.27.2017  
FINAL DESIGN

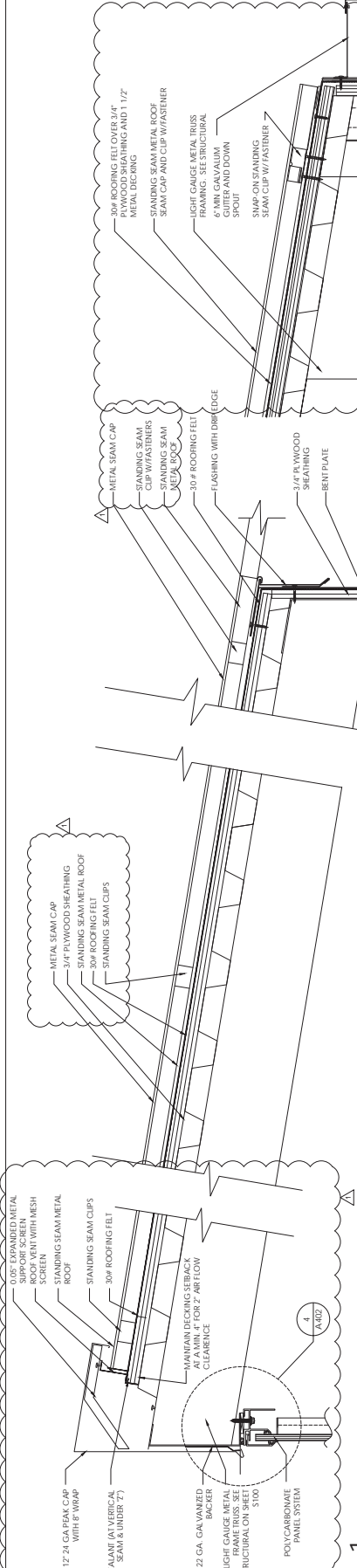
PROJECT NO.: UW-P1036-SA11-001

DRAWING TITLE:  
EXTERIOR DETAILS II

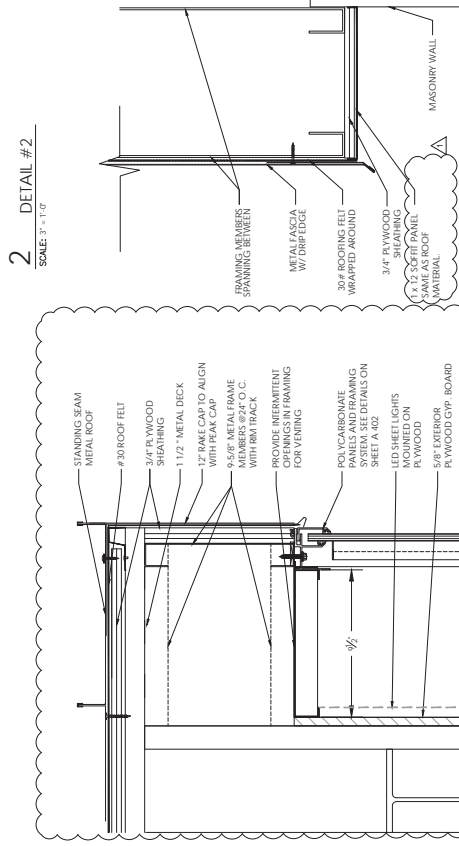
DATE: 11.27.2017

SHEET NO.: A401

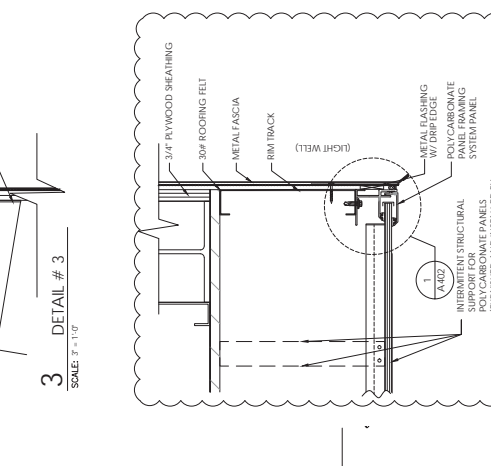
NO.	REVISION	DATE



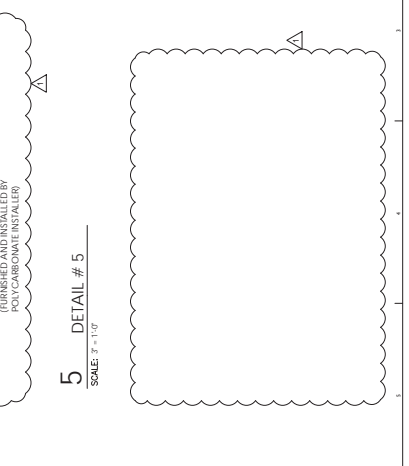
1 DETAIL #1  
SCALE: 3/4" = 1'-0"



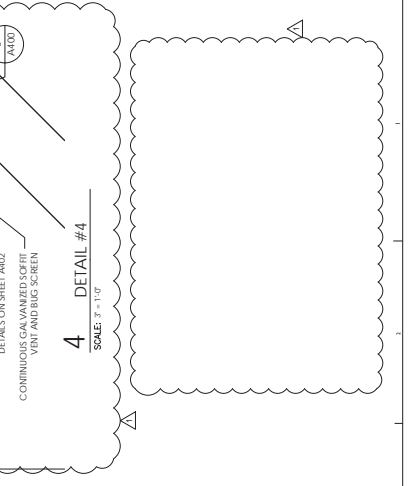
2 DETAIL #2  
SCALE: 3/4" = 1'-0"



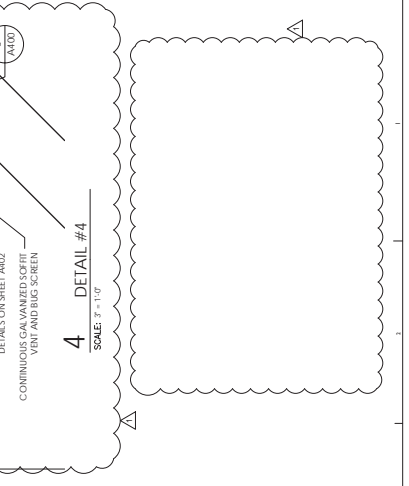
3 DETAIL #3  
SCALE: 3/4" = 1'-0"



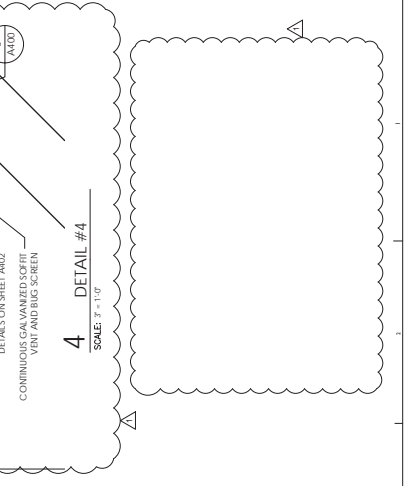
4 DETAIL #4  
SCALE: 3/4" = 1'-0"



5 DETAIL #5  
SCALE: 3/4" = 1'-0"



6 DETAIL #6  
SCALE: 3/4" = 1'-0"



7 DETAIL #7  
SCALE: 3/4" = 1'-0"



Village of Bridgview  
7900 S. Cicero Avenue  
Bridgview, IL 60435



Pace Suburban Bldg  
550 W. Algonquin Road  
Arlington Heights, IL 60005

Design Team



ARCHITECTURE INTERIORS PLANNING  
300 WEST STATE STREET, SUITE 1000, IL 60604  
P: 312.86.6415 F: 312.271.8988



ARCHITECTURE INTERIORS PLANNING  
1100 N. LAUREL STREET, SUITE 100, IL 60610  
P: 312.293.2381 F: 312.293.2382

Chief Engineer

Robinson Engineering  
South Holland, Illinois 60473  
T: (708) 331 6790

Structural Engineer

CE Anderson & Associates  
175 N. Franklin Avenue  
Chicago, IL 60606  
T: (312) 750 1701

M.E.P. Engineer

M.E.P. Infrastructure Solutions, Inc.  
440 S. LaSalle St.  
Chicago, Illinois 60605  
T: (312) 279-1185

REVISIONS

Mark Description Date

1

2

3

4

5

6

7

8

9

10

11

12

13

14

15

16

17

18

19

20

21

22

23

24

NOVEMBER

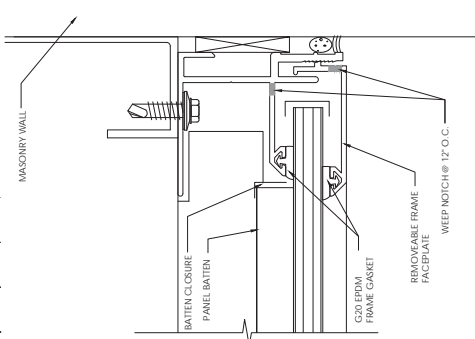
CHECKED BY:

DATE:

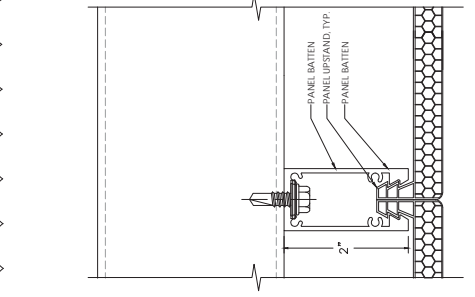
PROJECT NO.:

Sheet

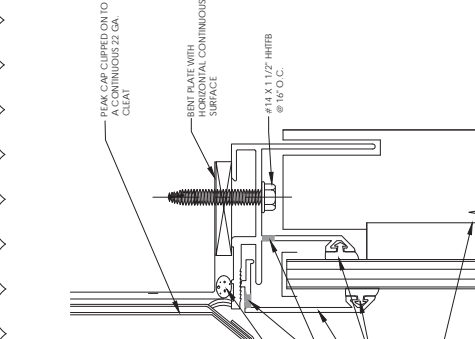
A402



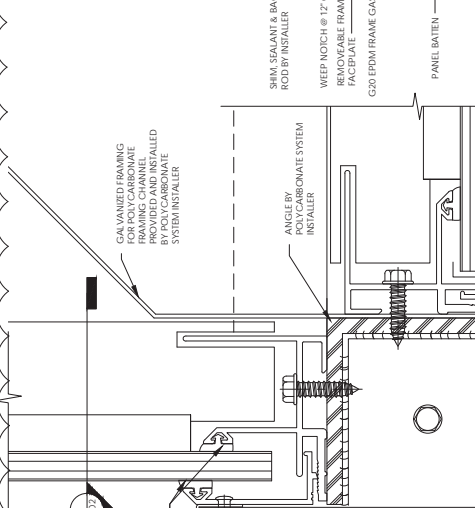
6 PANEL FRAMING CONNECTION AT MASONRY  
SCALE: 1" = 1"



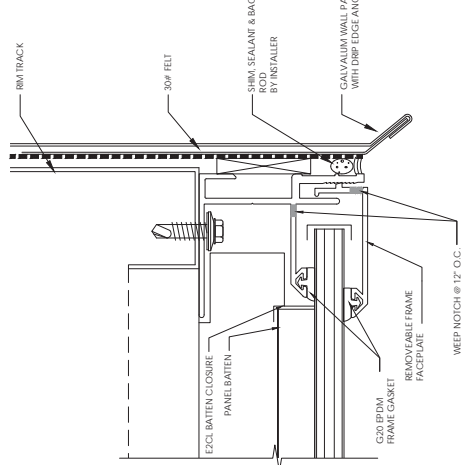
5 INTERLOCKING CONNECTION DETAIL  
SCALE: 1" = 1"



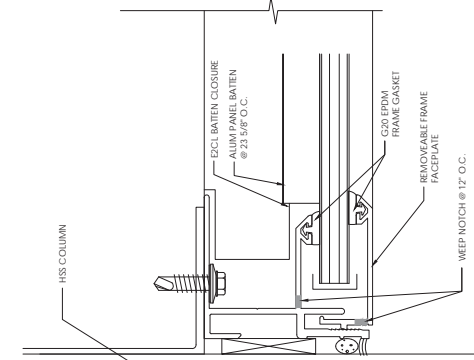
4 T/F FASCIA PANEL CONNECTION DETAIL  
SCALE: 1" = 1"



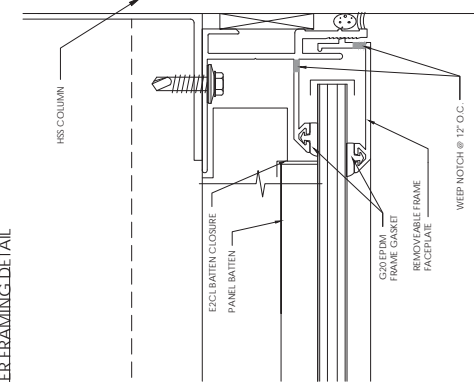
3 CORNER FRAMING DETAIL  
SCALE: 1" = 1"



1 FRAMING AT LIGHT WELL DETAIL  
SCALE: 1" = 1"



2 PANEL FRAMING AT COLUMN DETAIL  
SCALE: 1" = 1"



1 FRAMING AT COLUMN DETAIL  
SCALE: 1" = 1"

EXTERIOR DETAILS III

TOYOTA PARK  
TRANSIT CENTER  
PHASE II  
7000 S. HARLEM AVE.  
BRIDGEVIEW, IL 60455  
PROJECT NO.: UW-PT036-SA-17-001  
DRAWING TITLE:



Village of Bridgeview  
7900 S. Oxford Avenue  
Bridgeview, IL 60455



Pace Suburban Bldg  
550 W. Algonquin Road  
Arlington Heights, IL 60005



Design Team  
ARCHITECTURE INTERIORS PLANNING  
300 W. 11th Street, Suite 100  
Chicago, IL 60606  
P: (312) 581-6155 F: (312) 271-8888



ARCHITECTURE INTERIORS PLANNING  
300 W. 11th Street, Suite 100  
Chicago, IL 60606  
P: (312) 581-6155 F: (312) 271-8888

Chief Engineer  
Robbison Engineering  
175 N. Franklin Avenue  
Chicago, IL 60606  
T: (708) 331 6790

Structural Engineer  
CE Anderson & Associates  
175 N. Franklin Avenue  
Chicago, IL 60606  
T: (312) 750 1701

M.E.P. Engineer  
M.E.P. Infrastructure Solutions, Inc.  
440 S. LaSalle St.  
Chicago, Illinois 60605  
T: (815) 279-1185

Resource	Mark	Description	Date

PROJECT NO.: UWP1036-SA17-001  
PROJECT NAME:  
TOYOTA PARK  
TRANSIT CENTER  
PHASE II  
7000 S. HARLEM AVE.  
BRIDGEVIEW, IL 60455  
DRAWN BY: [Redacted]  
DATE: [Redacted]  
SCALE: 1/8" = 1'-0"

DOOR/ROOM FINISH  
SCHEDULES &  
DETAILS

Sheet  
A501

### DOOR SCHEDULE

DOOR #	ROOM NAME	DOOR				FRAME				REMARKS
		MATERIAL	TYPE	FINISH	SIZE	THK.	MATERIAL	FINISH	DETAILS	
100	TOILET	HM	A	PFTD	3'-0" X 7'-0"	1 1/2"	GM	3/A601	2/A601	1 COVERS SWEEPERS & SEALS, EXTERIOR
102	UTILITY ROOM	HM	A	PFTD	3'-0" X 7'-0"	1 1/2"	GM	3/A601	2/A601	2 COVERS SWEEPERS & SEALS, EXTERIOR

ABBREVIATIONS:  
AL ALUMINUM  
GL GLASS  
GVI GLOSS VENEER  
HNS HOLLOW INSULATED METAL  
INS. MTL INSULATED METAL  
FR PAIR  
PFTD PFTD  
UC 1/2" UNDERCUT  
WD SOLID CORE WOOD

1. ALL DOORS USED IN CONNECTION WITH EXITS SHALL BE OPENED WITHOUT THE USE OF A KEY FROM THE SIDE ON WHICH EGRESS IS MADE.  
2. ALL DOORS LEADING INTO HAZARDOUS ROOMS OR SPACES TO RECEIVE KNURLED HARDWARE.  
3. PROVIDE SAFETY GLAZING IF GLAZED PANEL IS BELOW 24" IN HEIGHT AND MORE THAN 18" WIDE.  
4. SEE FLOOR PLANS ON SHEETS A017 FOR LOCATIONS AND QUANTITIES OF DOORS.  
5. ALL DOORS TO BE GALVANIZED, INSULATED (IMW) GALVANIZED FRAME.

### ROOM FINISH SCHEDULE

ROOM NO.	ROOM NAME	FLOOR		BASE		WALLS		CEILING		REMARKS
		MATL.	FINISH	MATL.	FINISH	MATL.	FINISH	MATL.	FINISH	
<b>FIRST FLOOR</b>										
100	SEM-ENCLOSED WAITING AREA	CONC.	N/A	N/A	N/A	GLAZING	N/A	POLYCAR BONATE	PANELS	
101	TOILET	CONC.	N/A	4" COVERED EPOXY/7 RESINOUS	CHU	PAINTED	GYP. BD	PAINT		
102	UTILITY ROOM	CONC.	N/A	N/A	CMU (NORTH END) WITH ENJOINT WALLS CEMENT BOARDS (WEST WALL)	PAINTED	GYP. BD	PAINT	WEST WALL (FULL HEIGHT) PAINTED BUT CERAMIC TILE ON ALL THREE SIDES TOP BASKIN.	

### NOTES:

FRICITION-FIT RIGID INSUL TO  
SCHEDULED EXTERIOR WALL  
FLASHING: PITCH TO DRAIN  
SCHEDULED EXTERIOR WALL  
FLASHING: TO WALL TYPES ON  
SHEET A500.

REINFORCED BOND BEAM  
BRICK

AIR CAVITY

GALV. PRIMED & PTD. LINTEL.  
REFER TO STRUCTURAL  
WEEP HOLE VENTILATORS @  
24" O.C. IN HEAD JOINT

24" O.C. IN HEAD JOINT  
MASONRY TEE ANCHOR  
MASONRY TEE ANCHOR  
SET IN MASTIC & PLACED PRIOR  
TO ROUGH WALL FLASHING

S.S. DRIP EDGE LAPPED +  
FASTENER (MIN. 3" MIN. 16"  
BACKER ROD + PERMETER  
FRAME FT. COLOR  
MATCH

FIELD GROUND (CMU  
WITH INTERIOR  
BULLINGS

DOOR HEAD 5

4" FRAME

5.58"

12"

14" x 14"

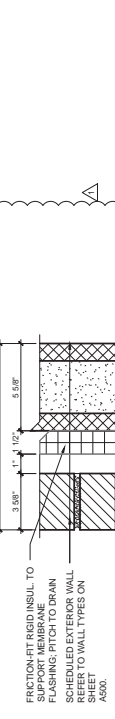
5.14"

4.30"

DOOR TYPE A

1 DOOR TYPES  
SCALE: 3/8" = 1'-0"

### 2 DOOR HEAD DETAIL



### DOOR HARDWARE SCHEDULE

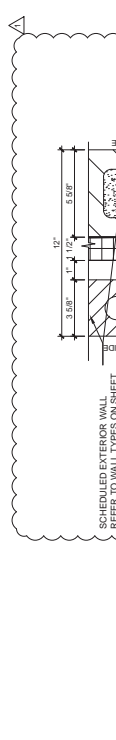
SET #	DESCRIPTION	MFR./CAT. #/ FINISH
NO.1	1EA CONT. HINGE	IVE / 224HD / 628
101	1EA PAC. RESTRN WIND	SCH / LVW486 / OCCUPIED
101	1EA MORTISE CYLINDER	BE S / 1E74 / 606
101	1EA SURFACE CLOSER	LCN / 4910 / 689
101	1EA FLOOR STOP	IVE / FS439 / US2SD
101	1SET SEALS	NSP / 158NA / CL
101	1EA DOOR SWEEP	NSP / 200NA / CL
101	1EA THRESHOLD	NSP / 186S / AL

NO.2	1EA CONT. HINGE	IVE / 224HD / 628
102	1EA STOREROOM LOCK	SCH / LVW00AL / 00A / 006
102	1EA MORTISE CYLINDER	BE S / 1E74 / 606
102	1EA SURFACE CLOSER	LCN / 4910 / 689
102	1EA FLOOR STOP	IVE / FS439 / US2SD
102	1SET SEALS	NSP / 158NA / CL
102	1EA DOOR SWEEP	NSP / 200NA / CL
102	1EA THRESHOLD	NSP / 186S / AL

### DOOR HARDWARE MANUFACTURER

ITEM	MFR.
CONTINUOUS HINGES	IVE (IVE)
LOCKS	SCHLAGE (SCH)
CYLINDERS & KEYS	BEST (BEST)
DOOR CLOSERS	LCN / ALLEGION (LCN)
STOPS	IVE (IVE)
THRESHOLDS & WEATHERSTRIP	NATIONAL GUARD (NSP)

### 3 DOOR JAMB DETAIL







Pace Electric, Inc.  
7500 S. Harlem Ave.  
Bridgeview, IL 60455



STUDIO  
ARQ  
ARCHITECTURE INTERIORS PLANNING

ARCHITECTURE INTERIORS PLANNING  
1000 N. Dearborn St., Suite 1000  
Chicago, IL 60610  
P: 312.946.6145 F: 312.279.8985

UrbanWorks  
ARCHITECTURE INTERIORS PLANNING  
2111 Madison Park East, Suite 700 Chicago, IL 60658  
P: 312.251.1200 F: 312.251.1202

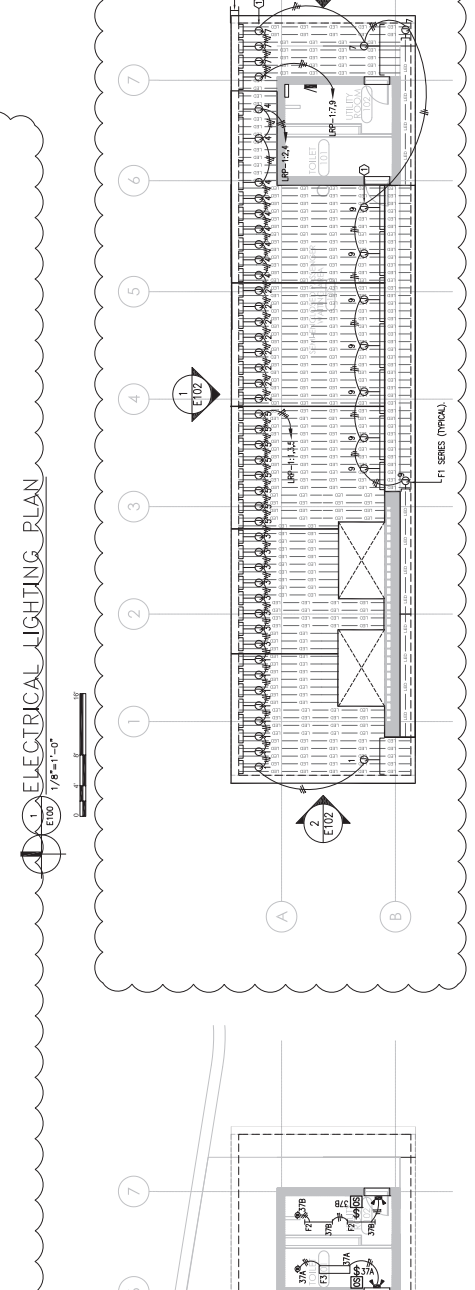
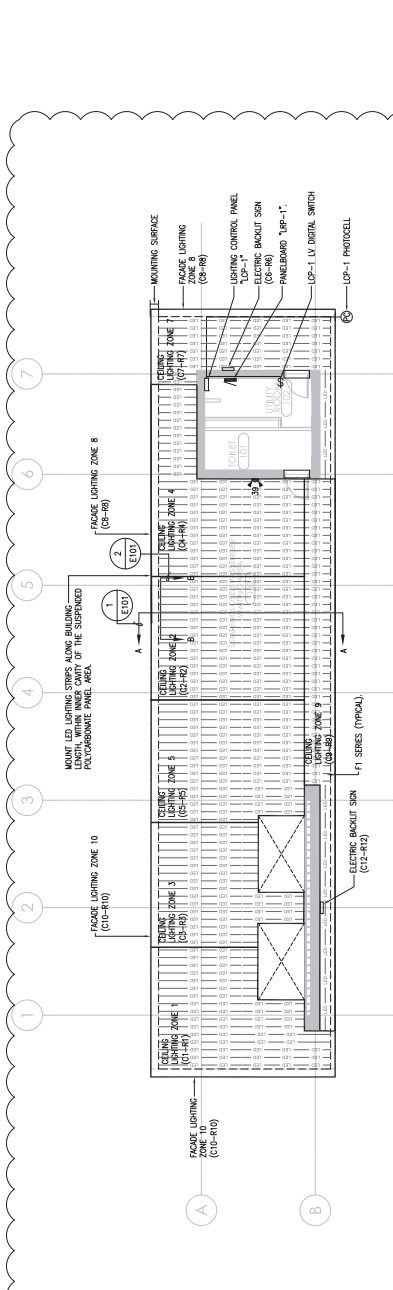
Civil Engineer  
Robinson Engineering  
1000 N. Dearborn St., Suite 1000  
Chicago, IL 60610  
T: (708) 331.6700

Structural Engineer  
CE Anderson & Associates  
175 N. Franklin Avenue  
Chicago, IL 60604  
T: (312) 750.1701

M.E.P. Engineer  
M.E.P. Infrastructure Solutions, Inc.  
440 S. LaSalle St.  
Chicago, Illinois 60605  
T: (312) 279-1185

- SHEET NOTES:**
- LISTED CIRCUIT NUMBERS FOR LIGHTING ARE FED BY LOP-1 EXCEPT WHERE OTHERWISE NOTED. SEE SHEET E200 FOR POWER PLANS AND SHEET E300 FOR PANEL SCHEDULES AND RISER DIAGRAMS. CONDUIT, NOT APPLICABLE FOR OTHER FIXTURES.
  - FEEDERS AND BRANCH CIRCUITS ARE SIZED FOR INSTALLATION IN CONDUIT, NOT APPLICABLE FOR OTHER FIXTURES.
  - ALL EXPOSED CONDUIT UP TO 8'-0" SHALL BE IMC.
  - CEILING LIGHTING SHALL BE CONTROLLED VIA LIGHTING CONTROL NON-DIMMED SECTION.
  - DIMMED SECTION.
  - ALL FIXTURE LIGHTING SHALL BE LED, AND DESIGNATED AS FEATURE TYPE "F1A".
  - CF-#F# REPRESENTS CIRCUIT NUMBER AT LRP1
  - RF-# REPRESENTS RELAY NUMBER AT RELAY PANEL
  - LED SHEETS/STRIPS AT CEILING SHALL RUN THE LENGTH OF THE STRUCTURE LEAVING A 6" SPACING AT EACH END.
  - FOR MOUNTING SURFACE AROUND BUILDING PLEASE REFER TO ARCHITECTURAL SHEETS.
  - PLANTER BOXES AND MOUNTING BRACKETS SHALL BE PLACED AT LEAST 18" FROM THE NORTH EDGE OF THE BUILDING FOR JUNCTION BOX ACCESS.

- KEYED NOTES:**
- NOTE REMOVE OTHER SUPPLIES FOR LIGHTING IN A JUNCTION BOX. PROVIDE MANUFACTURER-APPROVED ACCESSORIES FOR SUCH MOUNTINGS.



2 PARTIAL ELECTRICAL LIGHTING PLAN  
E100 1/8"=1'-0"

3 ELECTRICAL LIGHTING-POWER LAYOUT PLAN  
E100 1/8"=1'-0"

Revision	Description	Date
1	ADDED/REVISED	02.27.2018
	FINAL DESIGN	11.27.2017

Project Name: TOYOTA PARK TRANSIT CENTER PHASE II  
7000 S. HARLEM AVE. BRIDGEVIEW, IL 60455  
Project No.: UMPT13067 (SA-17-581)  
Drawing Title: ELECTRICAL LIGHTING PLAN

DRAWN BY:	Sheet
CHECKED BY:	E100
SCALE:	
DATE:	
PROJECT:	
DESIGNER:	
DATE:	
PROJECT:	





Office of Bridgeview  
7500 S. Oldale Avenue  
Bridgeview, IL 60455



Pace Suburban Bus  
1000 W. Lake Street  
Arlington Heights, IL 60005

Design Team



ARCHITECTURE INTERIORS PLANNING  
1000 W. Lake Street, Suite 1000  
Arlington Heights, IL 60005  
P: (847) 399-8400 F: (847) 399-8401

UrbanWorks  
ARCHITECTURE INTERIORS PLANNING  
1000 W. Lake Street, Suite 1000  
Arlington Heights, IL 60005  
P: (847) 399-8400 F: (847) 399-8401

Civil Engineer  
Robertson Engineering  
1000 W. Lake Street, Suite 1000  
Arlington Heights, IL 60005  
T: (847) 399-8400

Structural Engineer  
CE Anderson & Associates  
175 N. Franklin Avenue  
Chicago, IL 60604  
T: (312) 750 1701

M.E.P. Engineer  
M.E.P. Infrastructure Solutions, Inc.  
440 S. LaSalle St.  
Chicago, Illinois 60605  
T: (312) 279-1185

Issuance	Mark	Description	Date
1	ADDED/REVISED		02/27/2018
	FINAL DESIGN		11/27/2017

Project Name  
**TOYOTA PARK  
TRANSIT CENTER  
PHASE II**

7000 S. HARLEM AVE.  
BRIDGEVIEW, IL 60455

Project No.: UMP13061 (SA 17-581)  
Drawing Title  
**ELECTRICAL  
LIGHTING  
FASCIA  
ELEVATIONS**

DATE: 02/27/2018  
SCALE: AS SHOWN  
DESIGNED BY: [Blank]  
CHECKED BY: [Blank]  
PROJECT NO.: UMP13061  
SHEET NO.: E102

- SHEET NOTES:**
- FIA SERIES TYP. THROUGHOUT LAYOUT.
  - REFER TO ARCHITECTURAL DRAWINGS FOR PANEL DIMENSIONS.
  - FASCIA LIGHTING SHALL BE CONTROLLED VIA LIGHTING CONTROL DIMMED SECTION.
  - ALL FASCIA LIGHTING SHALL BE LED.
  - FOR MOUNTING SURFACE DIMENSIONS, REFER TO ARCHITECTURAL DETAIL.
- FIELD NOTES:**
- MOUNT REMOTE POWER SUPPLY FOR LIGHTING IN A JUNCTION BOX. USE MANUFACTURER-APPROVED ACCESSORIES FOR SUCH MOUNTINGS.

