



THE UNDERGROUND

Newsletter

2015

In this Issue

Joliet Multi Modal
Railway Tunnel Excavation
Residential Lighting
Stony Island Bridge Rehab
Jane Addams Tollway Lighting
Telecom
LED/Streetscape

JBCCO MESSAGE

Over the past several years, John Burns Construction Company has been fortunate to enjoy growth in each and every market that we perform construction services. By staying true to our core values of safety, quality, integrity and customer service, we have earned more market share and are poised for continued sustainable growth over the next several years. I am pleased to express my gratitude to all of our employees, vendors, subcontractors and customers that have allowed JBCCO to flourish and prosper throughout the recent years. Thank you all for the continued success of JBCCO!

Bill O'Malley – President

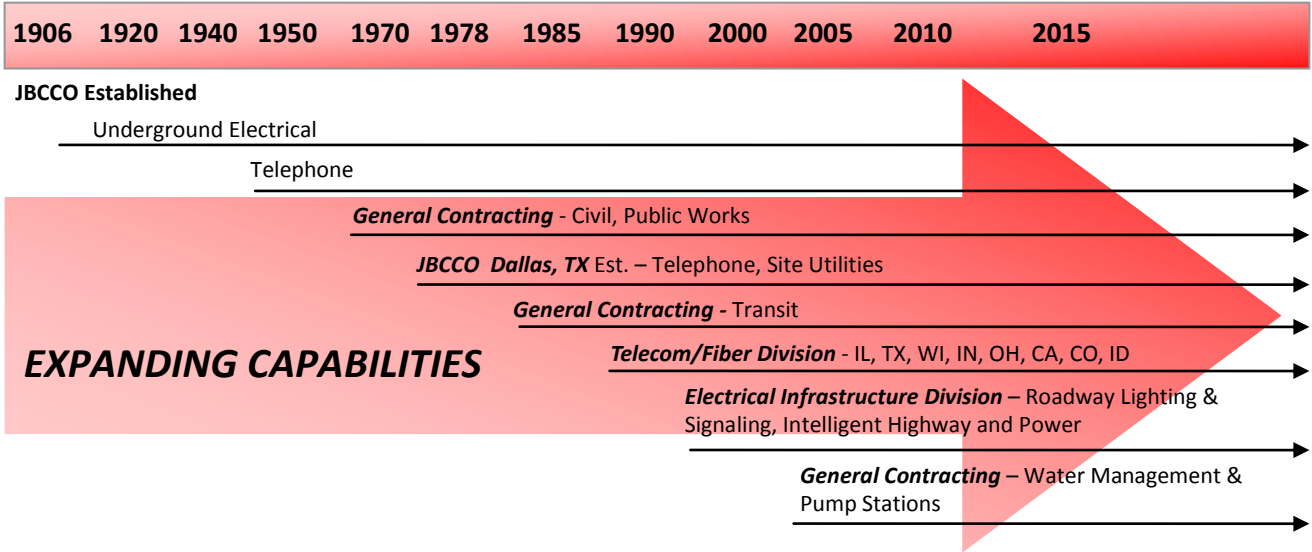


Core Values of JBCCO

Safety ◆ **Quality** ◆ **Integrity** ◆ **Customer Service**

The Growth of JBCCO's Services

John Burns Construction Company has been expanding their construction services since it began in 1906. JBCCO's first construction crews completed work for Middlewest Utilities (now known as ComEd) and the original telephone company in Illinois, IBT. The company continues to grow their services to include General Contracting, Telecommunications, Electrical Infrastructure, Water Management, Civil Construction and more.



EXPANDING CAPABILITIES



GENERAL CONTRACTING - SELECTED PROJECTS

Joliet Multi Modal Regional Transportation Center

JBCCO was the General Contractor for the construction of the Joliet Multi Modal Regional Transportation Center in Joliet, Illinois. This high profile project, completed December 2013, included the construction of a new train platform, a storm sewer system and rehabilitating two bridges.



Project highlights:

- Constructed a new 700 LF train platform with two elevated structural steel warming shelters on each end. The platform sits on a foundation of 30 foot long drilled soldier piles.
- Steel sheet piling was used as a temporary soil retention system in order to build the warming shelters next to the railroad tracks.
- Constructed a new storm sewer system for the City of Joliet as well as reconstructed drainage structures with new frames and grates.
- This project included the rehabilitation of two Metra Rock Island District bridges as well. The work on these two bridges consisted of the following:
 - o Removal of existing ballast and waterproofing
 - o Removal of deteriorated structural steel members
 - o Repair and Installation of new structural steel
 - o Cleaning and painting of steel elements
 - o Installation of new waterproofing on steel decking
- JBCCO self-performed all excavation, demolition, storm sewer and concrete work.



Railway Pedestrian Tunnel Construction

JBCCO is in the final stages of completing the rehabilitation of a pedestrian railway tunnel in Lombard, Illinois. This project includes all site work for demolition and removal of existing shelters, light poles and retaining walls. JBCCO installed a new pedestrian tunnel (147" O.D. by 1.5" W.T. Steel, 60' 10 3/4") and performed earth retention. Some of the other type of work performed includes the construction of new retaining walls, pedestrian ramps, sidewalk, lighting, electrical and mechanical systems including an ice melt system and drainage connecting to storm sewer structures.



Rail Station and Bridge Rehabilitation

JBCCO constructed a new rail station and reinforced a bridge for Metra in Flossmoor, Illinois in April, 2015. The project was performed in three phases in order to maintain a functioning train station for passenger use while working between two active tracks. The structural repair of the Metra/Union Pacific Bridge over Flossmoor Road required detours and closures of this major downtown artery. The road closure was projected to be in place for 12 weeks however, JBCCO completed this work in 6 weeks.

Project highlights:

- Removal and replacement of 535 LF of existing train platform, canopies, and gatehouses.
- Structural reinforcement of the Metra/Union Pacific Bridge over Flossmoor Road.
- Site work included demo and reconstruction of stairways and wheelchair ramps, as well as construction of a retaining wall and other miscellaneous masonry restoration work.



ELECTRICAL INFRASTRUCTURE - SELECTED PROJECTS

Chicago Residential Street Lighting Program

JBCCO was contracted by The City of Chicago to install 750,000 LF of new underground conduit and over 3,000 new street lighting poles in various City of Chicago residential neighborhoods. This project was completed in approximately 3 years. The work included replacement of existing street lighting controllers and ComEd services. This project also included the removal and replacement of 3,500 alley lights that are fed directly from ComEd 120V service.



CDOT Pulaski Streetscape Installation

JBCCO installed new decorative lighting on Pulaski Rd from Elston Ave to Wilson Ave in November, 2014. The work consisted of installing new underground conduit, cable, concrete foundation, street lighting controllers, and new decorative light poles. JBCCO painted existing poles to match new poles, retrofitted decorative finials and arms to existing poles, and installed new “count down” pedestrian heads at Montrose Ave.

Stony Island Bridge and Roadway Rehabilitation

JBCCO completed the Stony Island Bridge and Roadway Rehabilitation Project in Chicago on the Stony Island Interchange for the Illinois Department of Transportation in March 2015. This project included the installation of lighting, fiber optic and intelligent transportation systems.

Project highlights:

- Installed 175 light poles with associated conduit and foundations.
- Installation and removal of a temporary lighting system to provide lighting throughout the duration of the contract.
- Placement of 6 miles of fiber optic cable.
- Installation of 5 - 80' CCTV camera towers and foundations.
- Replacement of existing traffic surveillance system.
- Relocation and replacement of existing dynamic message sign power and communication equipment.



Highway Lighting and ITS Installation

JBCCO completed multiple projects on the Jane Addams Memorial Tollway Widening and Reconstruction project for the Illinois State Toll Highway Authority. One of the projects, completed in November 2014, included the installation of 111 light pole foundations and erecting poles and luminaires. JBCCO was also responsible for furnishing and installing 8 miles of PVC conduit and pulling cable for the light poles. Overall, JBCCO installed 80 ITS (Intelligent Transportation Systems) and Electric Handholes.



TELECOMMUNICATIONS - SELECTED PROJECTS

SSMA Fiber Optic Broadband Installation

JBCCO completed a fiber optic project for the South Suburban Mayors and Managers Association in Illinois during the winter of 2014 in an effort to improve broadband service to the south suburbs of Chicago.

Project highlights:

- Directional boring of 30 miles of 1.25" fiber optic innerduct, split between 14 laterals to provide improved broadband service to the south suburbs.
- Installation of 96 count fiber optic cable, connecting to existing CMS fiber optic cable running adjacent to I-57.
- Terminations at 30 end user sites, government buildings and schools.
- Strategic placement of handholes along the 30 miles of fiber optic cable easily allow future expansion of the network.



AT&T ACAS Program

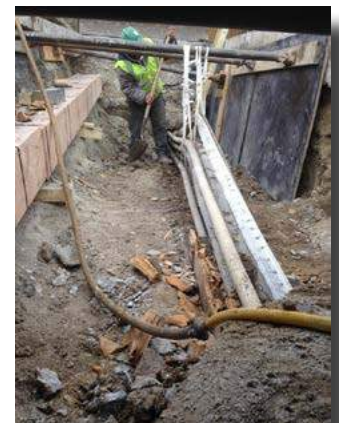


John Burns Construction company continues to complete a variety of projects for AT&T through ACAS contracting throughout Northern Illinois including many projects in the City of Chicago.

The work JBCCO performs includes:

- Duct bank installation via open cut trench;
- Duct bank relocates;
- Duct bank supports;
- AT&T manhole reconstructions;
- Directional boring;

One of the projects JBCCO completed included raising and supporting two AT&T duct/cable packages for 55 feet across Narragansett Avenue in Chicago for the installation of a new water main and sewer line.



Light Emitting Diode (LED) Installation - IDOT

JBCCO completed LED installations for the Illinois Department of Transportation at various locations throughout the Chicagoland area in 2015.

Project highlights:

- Replaced old incandescent traffic signals with new LED signals.
- Replaced old traffic control cabinets with newer cabinets in various intersections.
- All locations required an Uninterruptable Power Supply (UPS) to be added to all existing traffic control cabinets.
- The project schedule called for taking maintenance of as many as 50 traffic intersections from IDOT at a time.



JBCCO SAFETY

JBCCO maintains a world class safety program by developing safety leaders on all levels of the company. Every employee at JBCCO has the opportunity to be a safety leader.

Often times the terms 'leadership' and 'management' are used interchangeably. There are many differences between these two roles and the vital functions of each, in building a strong safety culture. Specifically, managers exist as part of an organization's structural hierarchy and exert formal influence over the people who work for them. Leadership, however, is a voluntary activity by which an individual exerts social influence over coworkers by setting an example of appropriate behavior, promoting shared goal, and effecting positive change in the organization.

Safety leaders demonstrate safe behavior and inspire their coworkers to do the same through their actions rather than influence others through power, status, or authority. JBCCO has safety leaders on every job site, in every department, across all levels of the company to maintain our culture of "safety first". Our safety leaders exhibit a variety of behaviors that influence coworkers to improve their safety performance, such as:

- Being an example by knowing and following company safety policies;
- Avoiding complacency for the dangers of the job;
- Reporting safety hazards and near miss incidents;
- Maintaining open communication with coworkers and management about safety concerns;
- Encouraging coworkers to exhibit safe behaviors;
- Showing coworkers small tokens of appreciation for a safe job well done;
- Being involved in safety initiatives;

Safety is a core value at John Burns Construction Company and our number one goal is to send everyone home safe at the end of the work day. Every day that JBCCO employees come to work there is an opportunity to be a safety leader. To all JBCCO employees, never underestimate the influence you have by choosing to work safely. The example you set just may prevent someone else from getting injured.

**"We are all leaders when it comes to performing our work safely at JBCCO. Let's ensure we all go home safe each and every day."
Bill O'Malley, *President***

JBCCO Philanthropy

John Burns Construction Company and our employees continue to support local charities in the spirit of giving back to the communities to which we provide our construction services. We are proud of our employees' commitment to support various charities in the Chicago area.

JBCCO will participate in the annual MS Slugfest Tournament again this summer. It is a coed, 16-inch softball tournament benefiting the National MS Society, Greater Illinois Chapter. The MS Slugfest takes place every August in Chicago's Mt. Greenwood Park and it has proven to be a fun day for all. Donations raised through MS Slugfest directly help more than 20,000 people who are living with MS in Illinois through education, support programs, and cutting-edge research. Good luck to the JBCCO Team this year!



JBCCO employees and families will again participate in the annual Plane Pull competition to support Special Olympics at O'Hare International Airport this fall.





17601 Southwest Highway
Orland Park, IL 60467



ILLINOIS HEADQUARTERS

17601 Southwest Highway
Orland Park, IL 60467

Main # 708-326-3500 - Fax # 708-326-3599

LOCAL CONTACTS:

Bill O'Malley, *President*

Scott Becker, *Vice President*



TEXAS HEADQUARTERS

655 East Main Street
P.O. Box 1117
Lewisville, TX 75057

Main # 972-434-6789 - Fax # 972-221-8301